

# MARLO

HEAT TRANSFER SOLUTIONS



## MarloAIR™

The modular air handling unit that  
configures to meet your specific needs

 **LEONARDO DRS**

## A CUSTOMIZED AHU AT A STANDARD PRICE

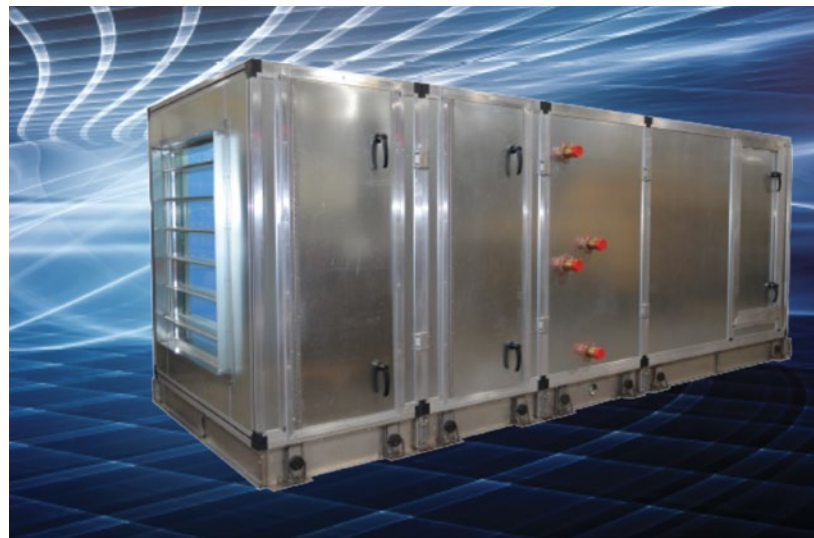
With the MarloAIR™ modular air handling unit, you no longer have to choose between high-priced custom AHUs with long lead times and off-the-shelf units with limited features that don't meet all your needs. Now you can get the best of both worlds: a pre-engineered unit (which reduces both cost and delivery time) with a variety of modules that can be configured to meet your specific application needs, from 8,000 to 56,000 CFM.

### DESIGNED, ENGINEERED AND BUILT BY THE HEAT TRANSFER EXPERTS

At Marlo, we have more than 90 years of experience providing custom heat transfer solutions. Marlo coils are trusted throughout the industry for quality, performance and reliability — and for meeting our customers' broad range of diverse needs. In addition, the Marlo Stratomizer® Dampered Face & Bypass Coil is well-known for its ability to efficiently preheat and temper outside air, and to protect against freezing.

### BACKED BY A 3-YEAR WARRANTY

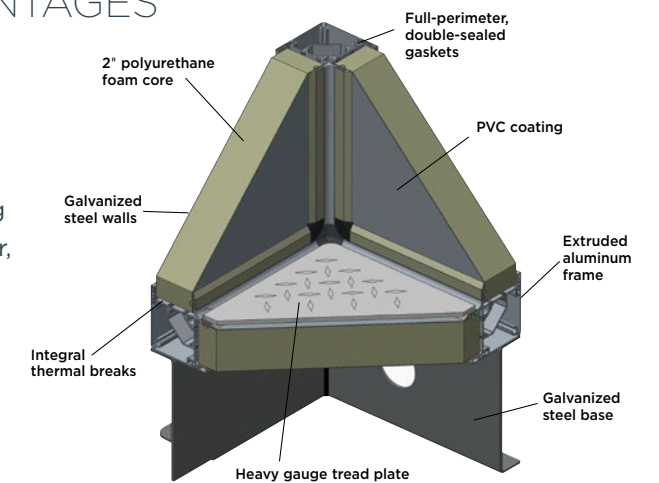
With our proven coils and optional Stratomizer at the heart of every MarloAIR AHU — plus top-quality materials throughout the unit — you can count on years of dependable service. That's why we have the confidence to back the MarloAIR with a full 3-year warranty — three times the industry standard!



## NO MATTER HOW IT'S CONFIGURED, THE MarloAIR™ HAS A RANGE OF BUILT-IN ADVANTAGES

### SUPERIOR WALL SYSTEM

We designed and built the MarloAIR wall system to provide excellent insulation value with minimal air leakage, including 2" foamed panels, integral thermal breaks and full-perimeter, double-sealed gaskets. Plus, every panel is constructed of galvanized steel for superior strength and durability, and is coated with PVC to resist bacteria and corrosion.



### MODULAR DESIGN

The pre-engineered MarloAIR can be customized to meet your specific needs without the high costs and long lead times of typical custom units. The modular design allows for easy transport to and through your building, and allows for fast and easy assembly. Plus, the unit's small footprint saves valuable floor space.

### PROVEN MARLO PERFORMANCE

The MarloAIR is built around Marlo's industry-leading coils and Stratomizer, giving you the reliable performance that comes with our 90-year track record of innovation, quality production and thermal management expertise. Our coils undergo extensive in-house testing and are AHRI certified.

### ENERGY EFFICIENT DESIGN

Air leakage and thermal transfer are the largest contributors to AHU inefficiency and increased operating costs. That's why we added a number of extra features to maximize efficiency, including our airtight (SMACNA leak class 9 for positive pressure and class 1 for negative pressure) fully insulated wall and floor panel system, double-walled and gasketed access doors, and state-of-the-art, direct-drive, energy efficient fan and motor assemblies.



*MarloAIR's modular design allows for easy transport, as well as fast and easy assembly – all in a small footprint that saves space indoors or out.*



*MarloAIR modules feature an advanced wall design with a 2" polyurethane foam core for superior insulation. Each extruded aluminum frame also has an integral thermal break that resists heat transfer.*





# MarloAIR™: QUALITY BUILT INTO EVERY COMPONENT

## MARLO COILS

Marlo's industry-leading chilled water, hot water or steam coils provide both excellent performance and long life. Various circuit options are available with full-size return bends and properly sized headers to ensure uniform flow and minimized pressure loss.

## STRATOMIZER®

A Marlo exclusive, the Stratomizer Dampered Face & Bypass Coil offers a proven and efficient method of preheating and tempering fresh outside air by enabling the use of full steam pressure or hot water flow to the coil at all times — eliminating freezing.

## FRAME

The MarloAIR's frame is made of military grade extruded aluminum to provide years of rust-free performance, and features an integral thermal break to minimize thermal transfer.

## WALL PANELS

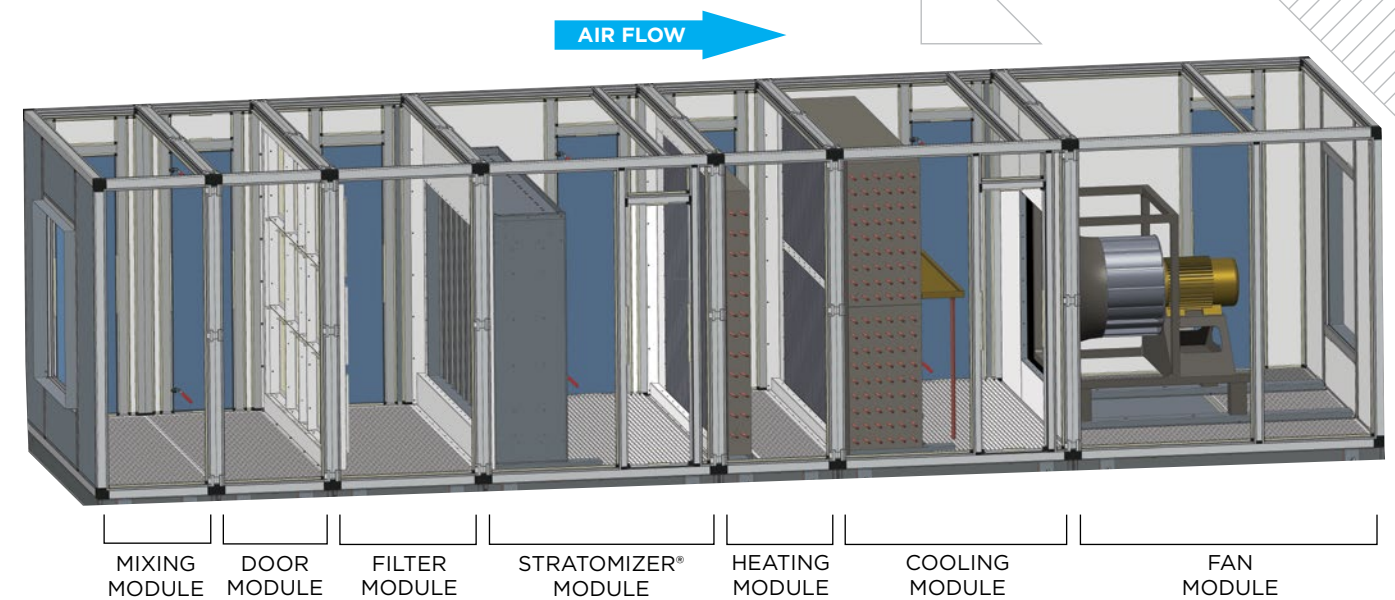
All wall panels are constructed of galvanized steel and are insulated with a 2" polyurethane foam core, offering energy efficiency and the prevention of condensation build up on exterior surfaces. The insulation is UL 94 V-O fire rated.

## SERVICE DOORS

Access doors feature double wall construction with a minimum of two tapered pawl latches to uniformly compress the door gasket (made of closed cell neoprene) into the door jamb for an air-tight seal.

## UNIT FLOOR

The MarloAIR's floors are constructed of heavy-gauge aluminum diamond plate to protect the insulated floor panels from damage. Floor panels are made from a sandwich of 24-gauge steel sheets on the outside with high-efficiency polyurethane foam insulation in the center. A durable coating is applied to the steel panels at the factory for added protection.



## BASE SYSTEMS

The base is constructed of 10-gauge galvanized steel with reinforced ribs for extra support.

## DRAIN PAN

The integral insulated stainless steel drain pan is double pitched, and conforms to ASHRAE standards for acceptable indoor air quality.

## FANS & MOTORS

Energy efficient, direct drive fan and motor assemblies are designed to meet CFM and pressure drop requirements with minimal energy usage. All assemblies are mounted on vibration isolators.

## MODULE LIGHTS

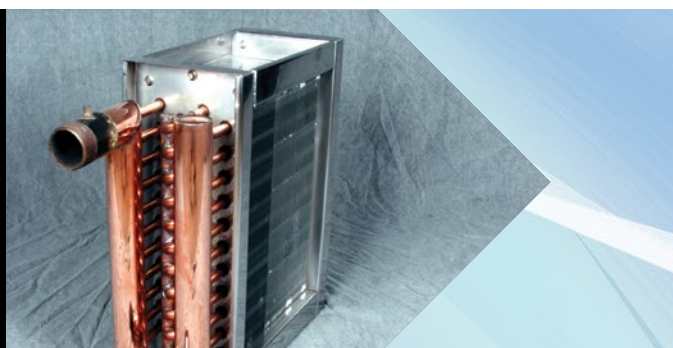
Light kits can be added to any module to make inspection and maintenance easier.

## FILTER MODULES

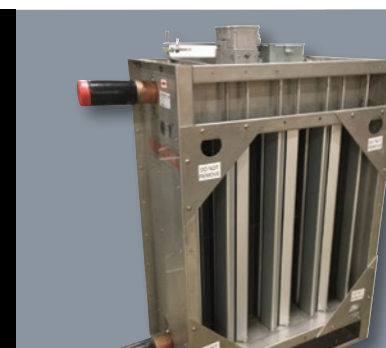
Filter framing options include 2" pleated panel, 4" pleated panel and 12" rigid cartridge with 2" pleated panel.



*MarloAIR is built around our industry-leading coils, which undergo extensive in-house testing and are AHRI certified.*



*The industry-leading Marlo Stratomizer Dampered Face & Bypass Coil efficiently preheats and tempers outside air to protect against freezing.*





# YOUR ASSURANCE OF QUALITY

## 3-Year Warranty

In an industry where the standard warranty is just one year, we are proud to offer what we feel is the best AHU warranty in the business. MarloAIR is warranted against defective workmanship and material for a full three years from date of shipment. This includes third-party components such as fans, motors, dampers, etc., even when the OEM warranty has expired.

## Certifications

Marlo coils are AHRI certified, meaning they meet a series of stringent industry standards. This ensures reliable performance in the field.



## ISO 9001 Registered

Quality is a way of life at Marlo, with every employee being committed to continuous quality improvement. Our quality management system is ISO 9001 certified, which requires frequent surveillance audits to ensure ongoing compliance.



## Testing

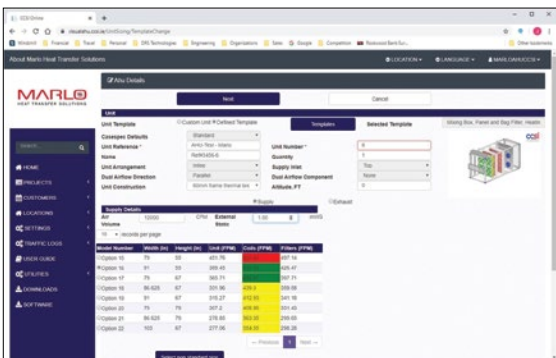
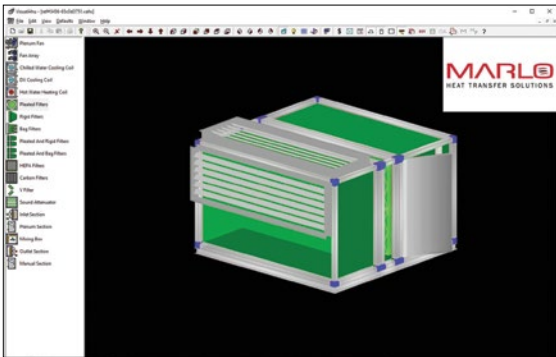
All of our products are tested before leaving the factory to ensure trouble-free operation.

## MarloAIR™ CONFIGURATOR SOFTWARE

Our custom designed MarloAIR online configurator allows you to size, configure and quote an air handling unit in the field, without needing to contact the factory. The user-friendly, step-by-step configurator assures that your AHU will meet all the needs of your specific application, while also shortening order processing and lead times.

The MarloAIR online configurator offers these advantages:

- Instant proposal and submittal package generation
- Direct-to-production order transmission, for best possible lead times
- Simple tracking of quote revisions
- 3D Revit model creation
- Additional features available with the downloaded desktop version



## MarloAIR™ DIMENSIONS

AIRFLOW VOLUME	8,000 TO 24,000 CFM	24,000 TO 56,000 CFM (COMING SOON)
OVERALL HEIGHT	From 64.0" to 103.0"	TBD
OVERALL WIDTH	From 64.0" to 103.0"	TBD
LENGTH		LENGTH
MIXING MODULE/AIR INTAKE	From 32.3" to 60.0"	TBD
LENGTH		LENGTH
ACCESS MODULE WITH 18" DOOR	From 31.5" to 60.0"	TBD
LENGTH		LENGTH
2", 4", 12" FILTER WITHOUT DOOR	From 12.0" to 60.0"	TBD
2", 4", 12" FILTER WITH DOOR	From 31.5" to 60.0"	TBD
LENGTH		LENGTH
COOLING COIL	From 12.0" to 50.0"	TBD
STRATOMIZER MODULE	From 53.0" to 103.0"	TBD
HEATING COIL WITHOUT DOOR	From 18.0" to 50.0"	TBD
HEATING COIL WITH DOOR	From 32.0" to 50.0"	TBD
LENGTH		LENGTH
FAN MODULE	From 57.0" to 90.0"	TBD

Sizes are variable using VisualAHU software. For ranges outside those listed, consult Marlo.

## MarloAIR™ MODULE CONFIGURATIONS

### Mixing Module

- Generally the first module
- Opening sized per customer need
- Door options: left, right, both, none
- Light or no light option

### Filter Module

- Generally before coil module
- 2" or 4" panel filters, or 12" cartridge filter
- MERV rating per customer need
- Door options: left, right, both, none
- Light or no light option

### Door Module

- Door options: left, right, both
- Light or no light option

### Stratomizer Module

- Always before fan module
- Door options: left, right, both, none
- Light or no light option

### Heating Module

- Always before fan module
- Door options: left, right, both, none
- Header connection options: left, right, side
- Light or no light option
- Coil can be up to 3 rows deep

### Cooling Module

- Always before fan module
- Door options: left, right, both, none
- Header connection options: left, right, side
- Drain connection options: left, right, side
- Light or no light option
- Coil can be up to 12 rows deep

### Fan Module

- Always the last module
- Access panel: left, right, both, none
- Light or no light option
- 9 motor HP sizes
- Outlet duct sized per customer need