

Air Make-Up Units

Product Line Overview & Capabilities

Air Make-Up Units



Customized Solutions Unmatched Flexibility

As one of the most sophisticated manufacturers of Air Make-Up Units, Aerovent's unique ability to customize our products for the exact application is second to none. By leveraging our comprehensive product offerings and 3D modeling technology, Aerovent has the knowledge and engineering expertise to provide customized solutions for our customers' project-specific needs.

When you partner with Aerovent, not only do you get the product flexibility you require, you also get the highest quality products and construction features to meet your precise specifications. And with a wider range of sizes, custom components, and specialized coatings, we can provide more options and controllability than any manufacturer.

Validation

- UL 508 Electrical Control Panel Certification
- ANSI Z83.4 Construction
- ETL Listing
 - Z83.4 – 100% Outside Air
 - Z83.18 – Recirculated Air
- NEMA 12 Control Enclosures and NEC Oil tight Wiring Standards
- AMCA 210 Fan and Blower Performance Tested in accordance with AMCA 210 Procedures
- FM & IRI Insurance Standards as required

Laboratory/Field Testing & Startup Services

- Sound & Air Performance Testing
- Vibration Testing
- Seismic Testing (test lab only)
- Equipment Commissioning

Controllability

- Factory installed controls are available with a wide range of options and can be customized to interface with automated building management systems

Customer Drawings

- Customer drawings are available in 3D, 2D and Revit files formats

Air Make-Up Units



Industries Served

- > Automotive
- > Paper & Pulp
- > Power Generation
- > Food Processing
- > Chemical Processing
- > Wastewater & Sewage
- > Manufacturing
- > Foundries
- > Pharmaceutical
- > Textile
- > Warehousing
- > Mining
- > Transit Stations
- > Steel Mills
- > Marine

Typical Applications

- > Heating
- > Cooling
- > Humidifying
- > Energy Recovery
- > Air Filtration / Fresh Air Supply
- > Air Turnover
- > Door Air Heaters
- > Process Heating or Cooling
- > Product Dryers
- > Paint Finishing Systems



AMU Product Options

Heating

- > Direct Gas Fired
- > Direct Gas Fired with 80/20 Recirculation
- > Indirect Gas Fired
- > Modulating
- > Face & Bypass
- > Integral Face & Bypass
- > Modulating Electric Heat

Cooling

- > Air Cooler Spray Type
- > Air Cooler Media Type
- > Chilled Water
- > Direct Expansion – Refrigerant

Humidification

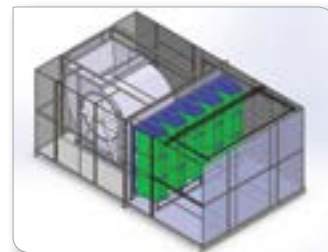
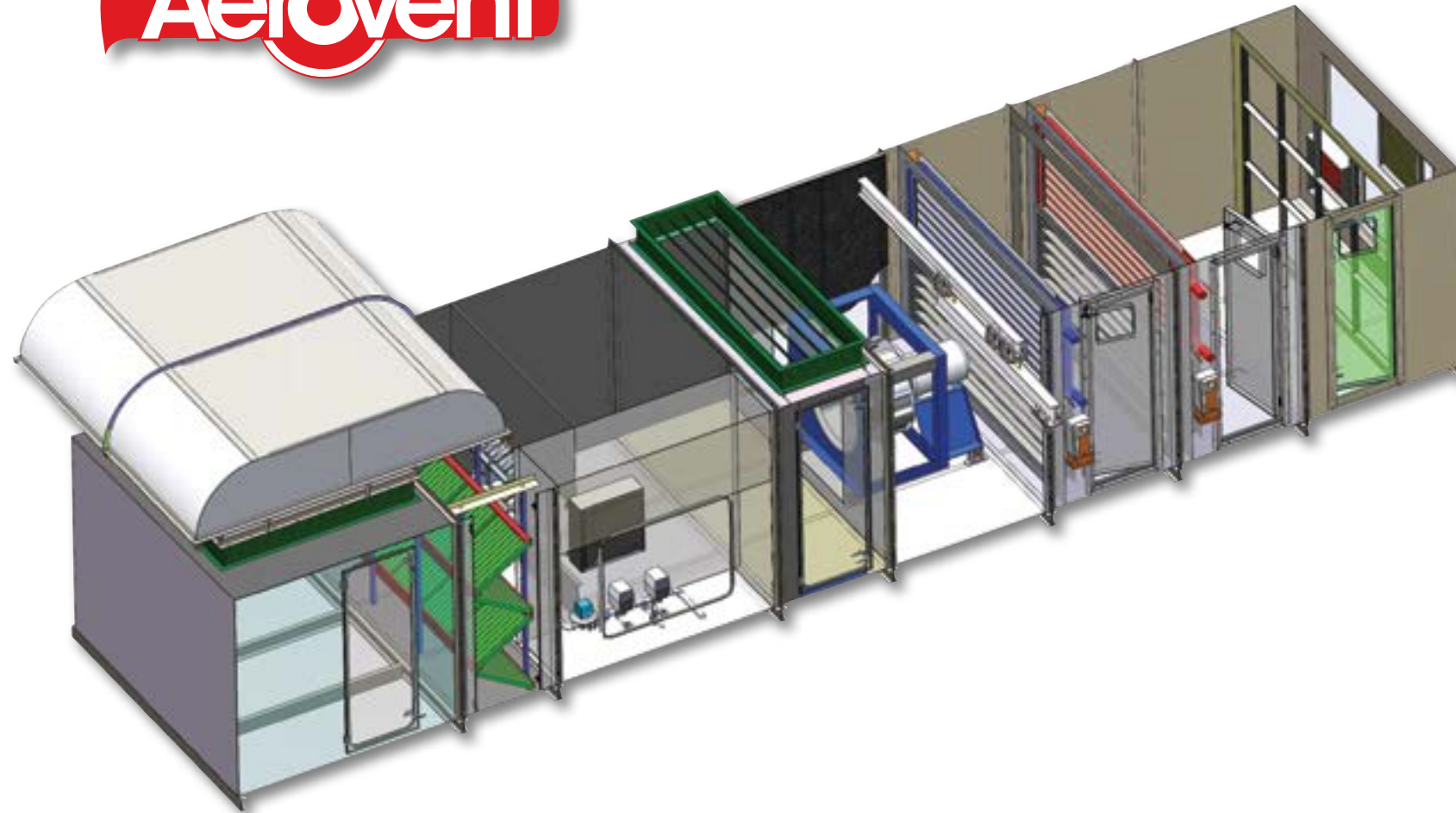
- > Mist spray Humidification
- > Steam Humidification

Energy Recovery

- > Air to Air Aluminum Flat Plate Cross Flow
- > Rotary Heat Recovery Wheel
- > Heat Pipe

Filters

- > Pleated Filters
- > Metal Filters
- > Bag Filters
- > Cartridge Filters
- > HEPA Filters
- > Available in a Wide Range of Efficiency



V-Bank Carbon Filters



Motor Removal Rail



FM or IRI Pipe Train



Discharge Sensor



Direct-Fired Gas Heat



Velocity Meter



DDC Controls



Tamper-Proof Control Station

AMU Product Options

Configurations

- > Top Horizontal
- > Bottom Horizontal
- > Upblast
- > Downblast
- > Vertical Air Flow Up
- > Vertical Air Flow Down
- > Rooftop Mounted (with Curb)
- > Rooftop Mounted (without Curb)
- > Outdoor Pad Mounted
- > Indoor Mounted

Controllers

Stand Alone Controls

- > Outlet Temperature Control (OTC)
- > Modulating Room Temperature Control (MRTC)

Direct Digital Control (DDC) Systems

- > DDC Compatible – Take control of Equipment with Existing DDC System
- > Factory Supplied DDC System

Fan Types

- > Centrifugal SWSI
- > Centrifugal DWDI
- > Axial
- > Plenum
- > Spark Resistant

Construction

- > Painted Mild Steel
- > Stainless Steel
- > Galvanized
- > Aluminum
- > Full Welded or Bolted

Product Line Overview



V-Bank Filter Section



Direct-Fired Gas Heat

Industrial Direct-Fired Gas Models FCBT & BIBT

Direct-fired gas air make-up units are a complete air supply system in a self-contained package with fan, burner, and controls. The units are ready for connection to the gas line and power source. These systems are for use in industrial or commercial applications where supplying tempered outside air is required.

Standard Construction

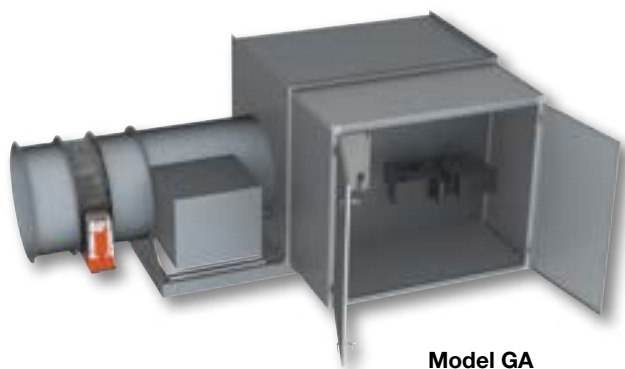
- Heavy-duty forward curved or backward inclined DWDI centrifugal blower
- 14-gauge welded steel housing
- Peaked roof to eliminate standing water
- 0 to 92 degree temperature rise
- Dual fuel burner
- Factory assembled and tested
- Remote operating station

Heavy Industrial Direct-Fired Gas Models GACDW & GA

Gas-fired air make-up units are complete air supply systems for the ultimate in safety and dependability. These packaged units are available in axial and centrifugal types. The equipment is designed for tempering outside air and supplying it into the building for ventilation make-up and balancing of negative pressure. The units are also adaptable to other applications where ordinary heating or drying operations are involved.

Standard Construction

- Heavy-duty industrial Centrifugal DWDI BI BIA, or Axial Fans
- Welded 12 gauge steel housing
- Peaked roof to eliminate standing water
- 0 to 92 degree temperature rise
- Dual fuel burner
- Factory assembled and tested
- Remote operating station



Model GA
Axial

Model GACDW
Centrifugal

Steam

Models S, SACSW & SACDW

Steam distributing tube coil gives good temperature distribution, maximum freeze protection, and allows the tubes to expand without transmitting stresses to the tubes. Propeller and centrifugal models are available. The centrifugal unit is available with an industrial backward inclined or airfoil wheels, as well as a commercial duty forward curved fan. Units come assembled and include fan, coil, vacuum breaker, and motorized shutter.



Industrial Backward
Inclined Fan



Commercial Duty
Forward Curved Fan



Gas Door Air Heaters

Model DAH

Door Air Heaters temper the sudden influx of cold air when an overhead door is open. To mix hot and cold air, it is necessary to create a highly turbulent condition directly in front of the door. The Gas Door Air Heater provides a high velocity blast of hot air to mix with the sudden influx of cold air.

Performance

6200 CFM unit has outlet velocity of 3500 FPM.
4100 CFM unit has outlet velocity of 2300 FPM.

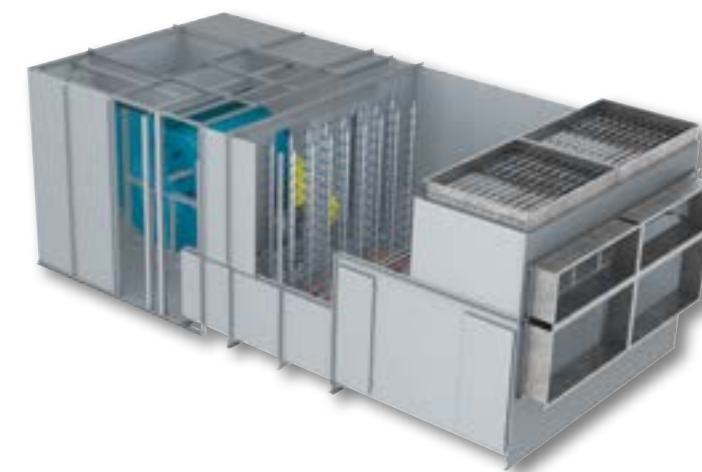


Spray Type Air Coolers

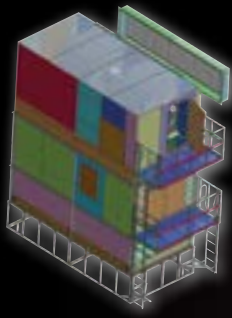
Model AC

The spray type air cooler is an enclosure containing three elements: a spray bank consisting of nozzles for producing a fine spray from water supplied to them under pressure, an eliminator for removing water from air passing through the air cooler, and a basin for collecting the used water to be returned to the pump for recirculation.

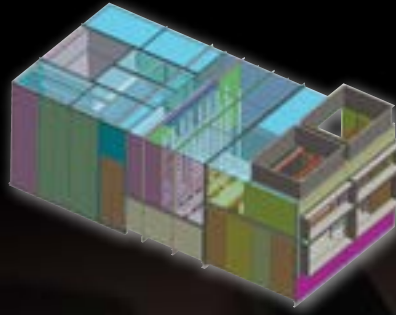
This same cooler can work as a highly efficient heat absorber when provided with chilled water from a mechanically refrigerated chiller or from a well (well water temperature 55°F (12.7°C) or lower).



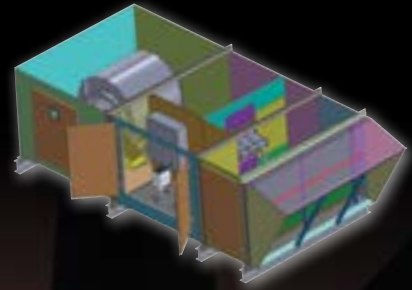
Offering A Full Line Of Custom Air Make-Up Units



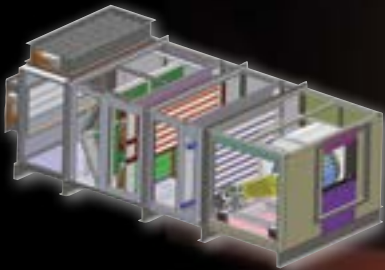
Vertical Gas Fired



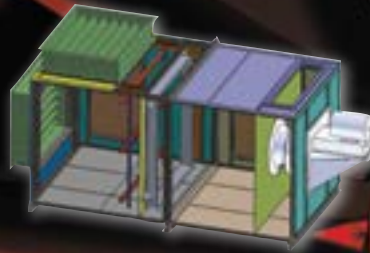
Air Coolers



Direct-Fired Gas Heat



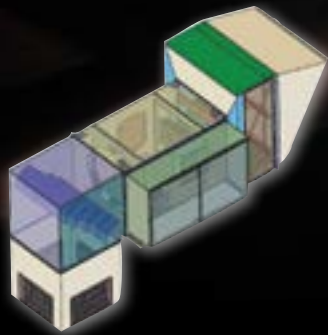
Hot/Chilled Water



**High Temperature
(Plug Fans)**



**Electric Heat
Air Make-up**



**Direct Drive Propeller
Gas Heat**



**Fume Exhaust
Energy Recovery**



WWW.AEROVENT.COM